



## 3PYO LiDAR – Assembly Instructions

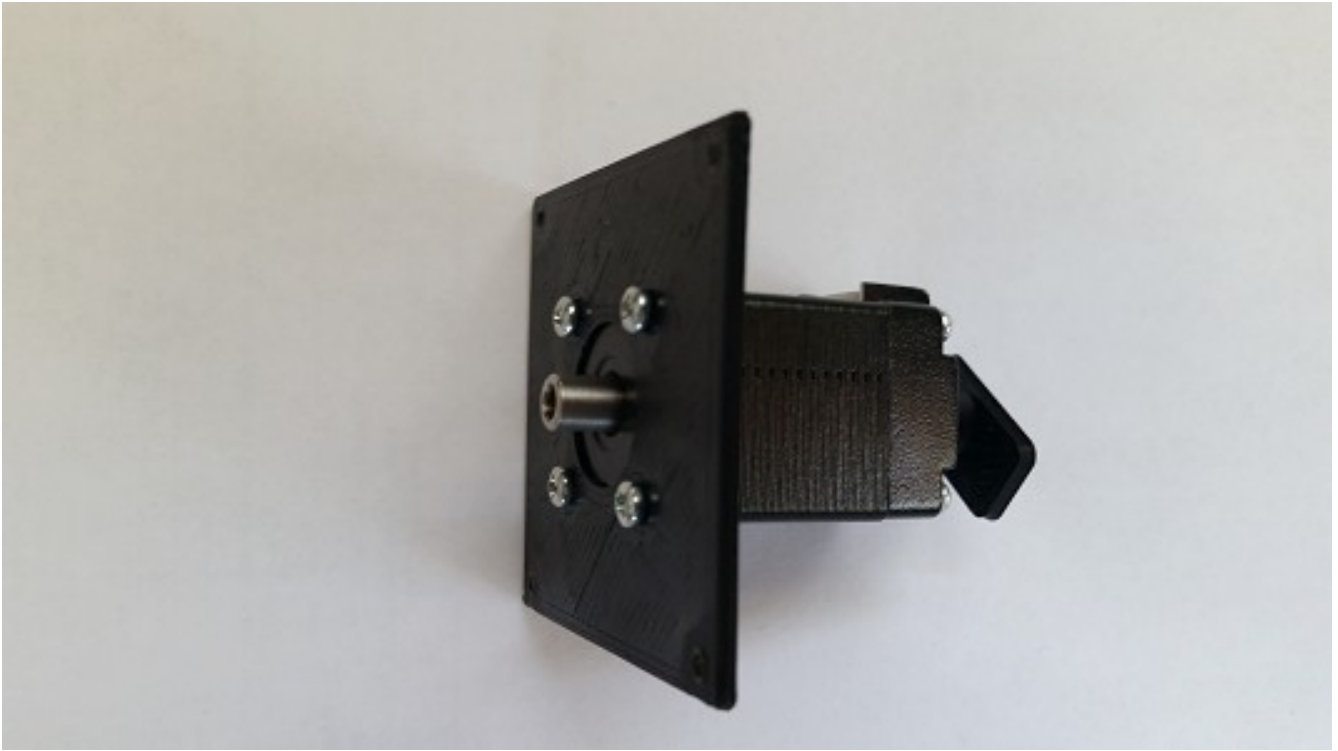
# Rhoeby Dynamics – 3PYO LiDAR – Assembly Instructions

---

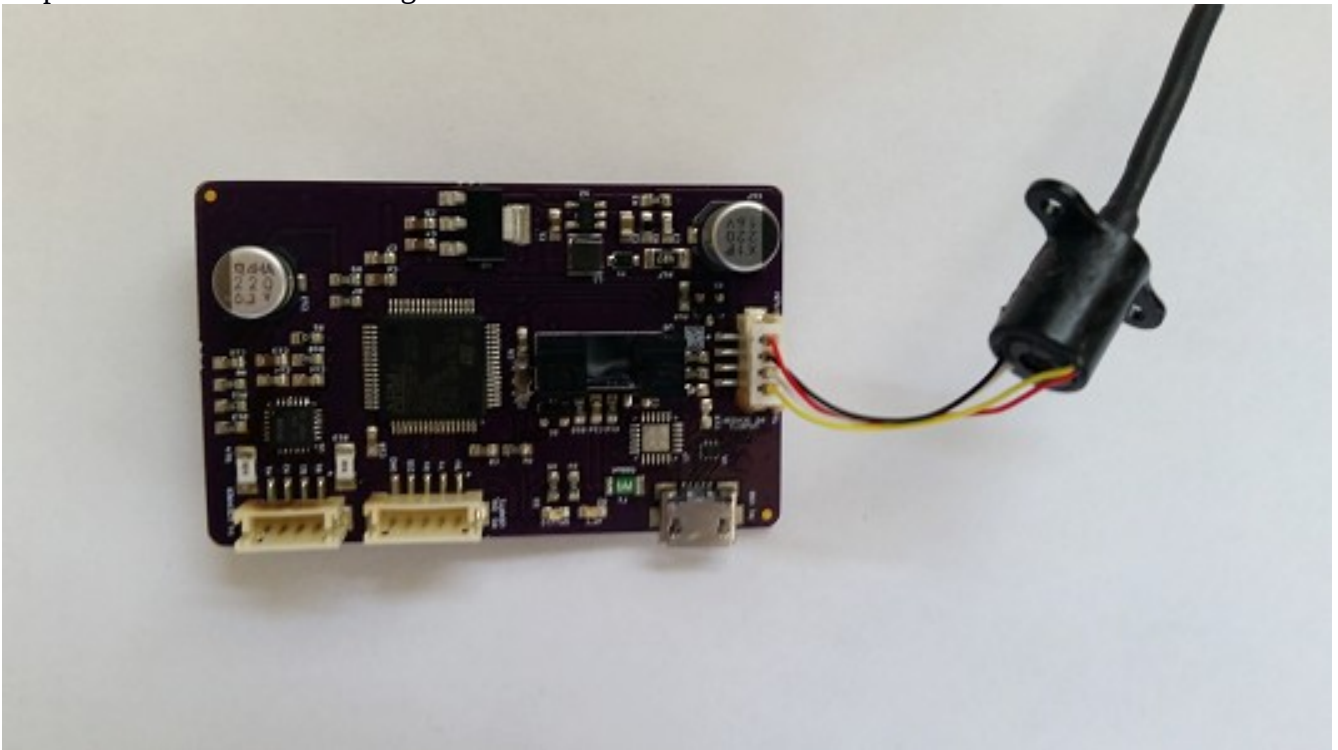
## Assembly Steps



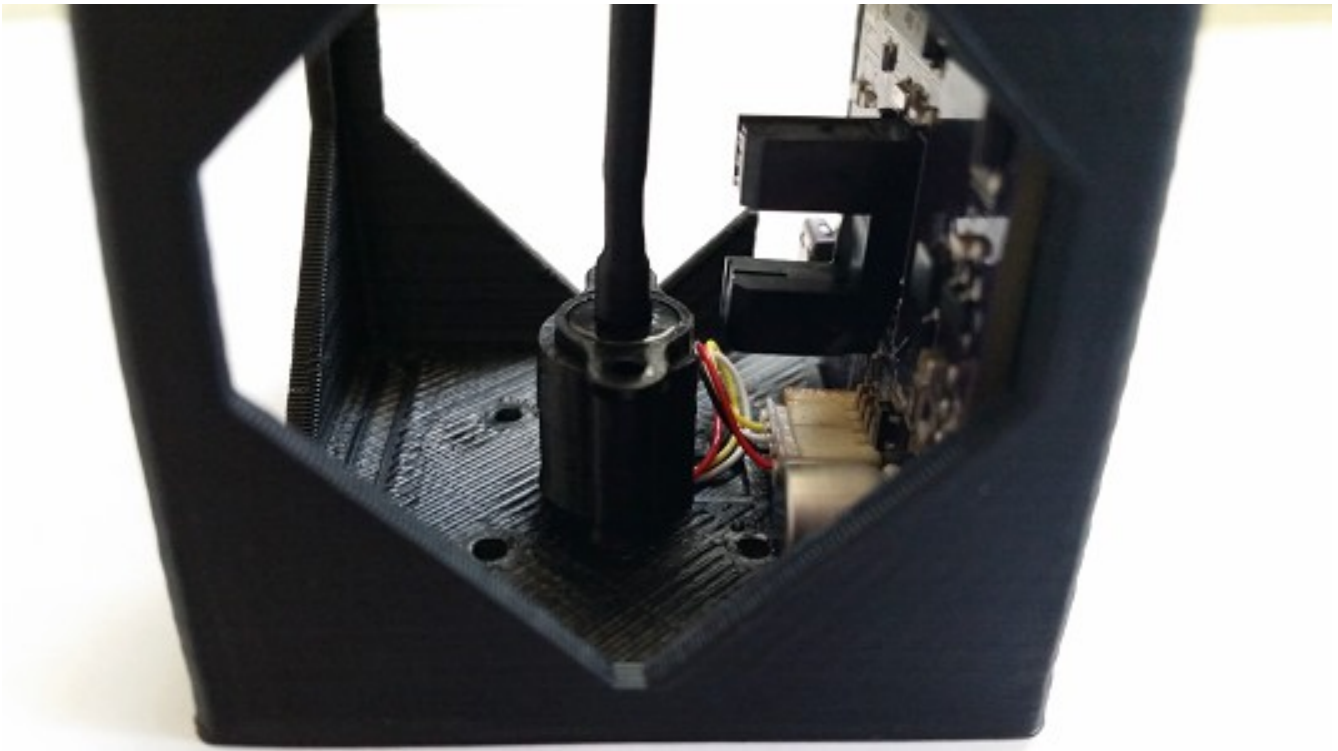
Step 1 – glue rotor to motor shaft



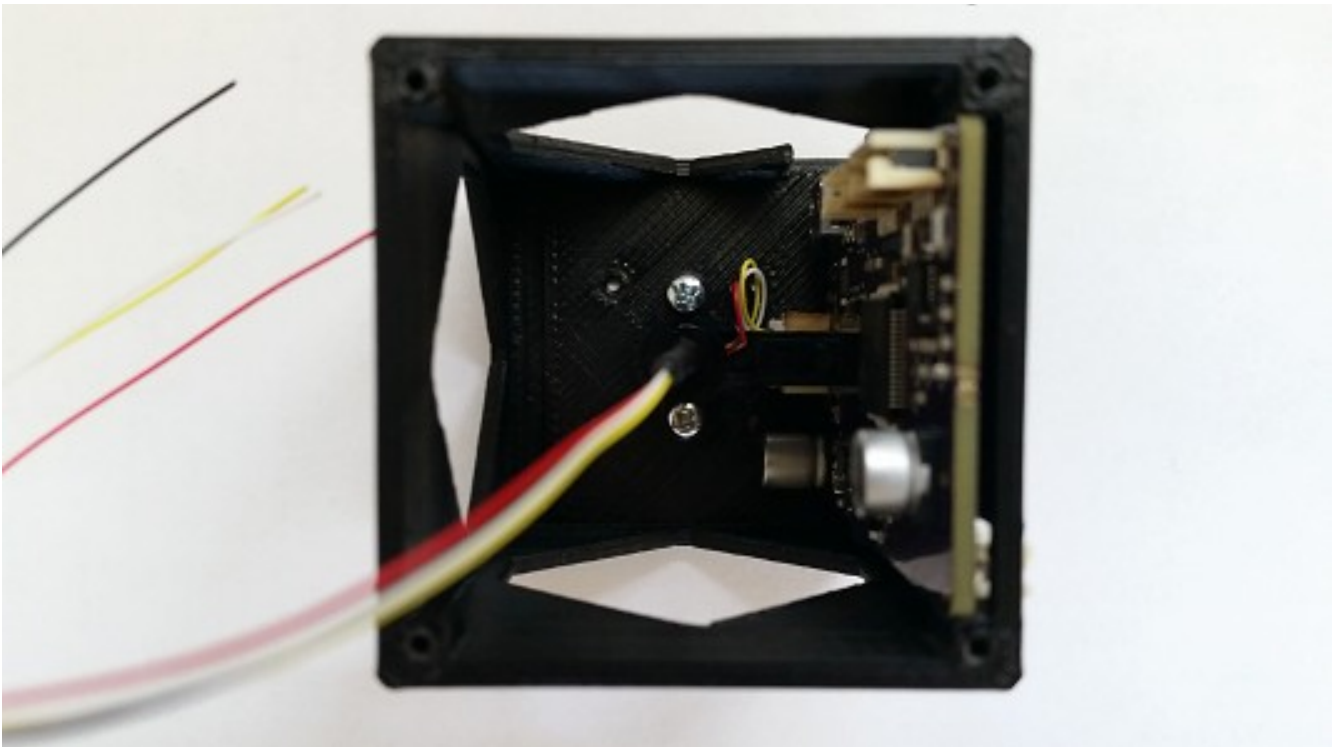
Step 2 – screw motor to housing lid



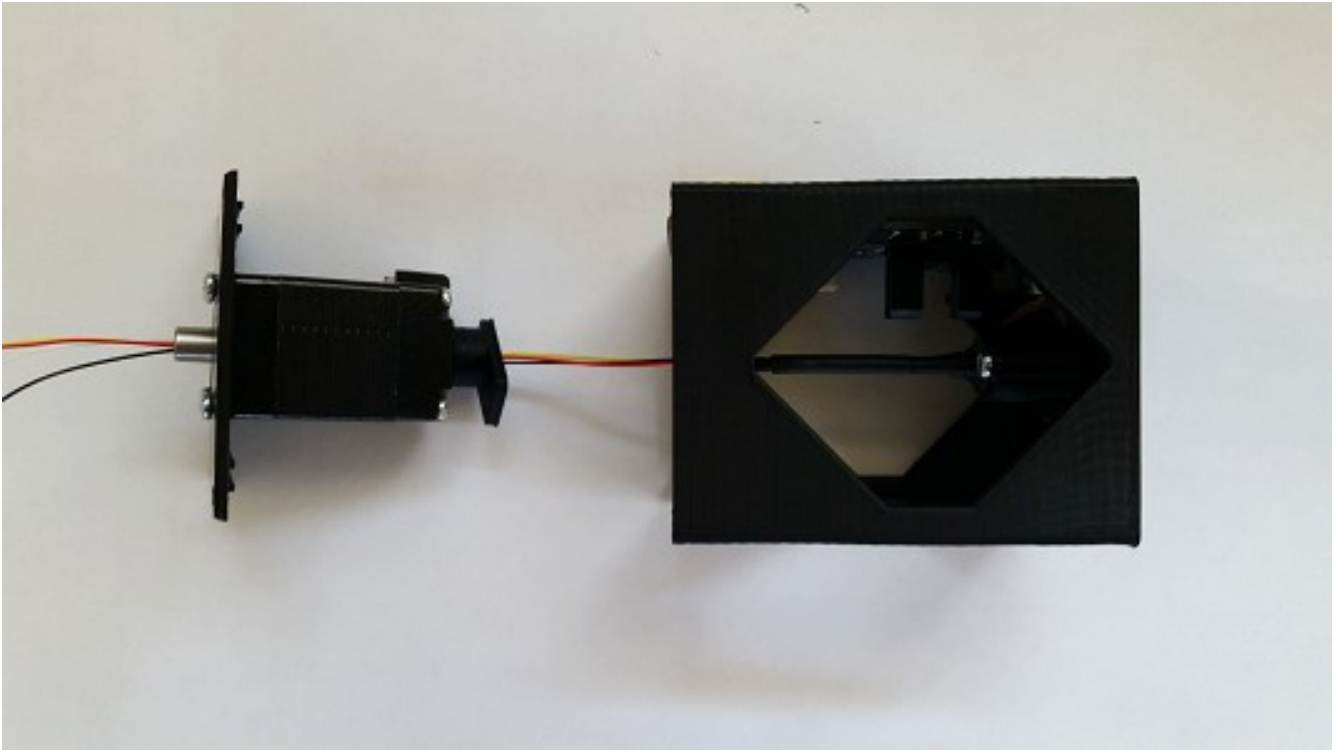
Step 3 – plug slip-ring into PCB



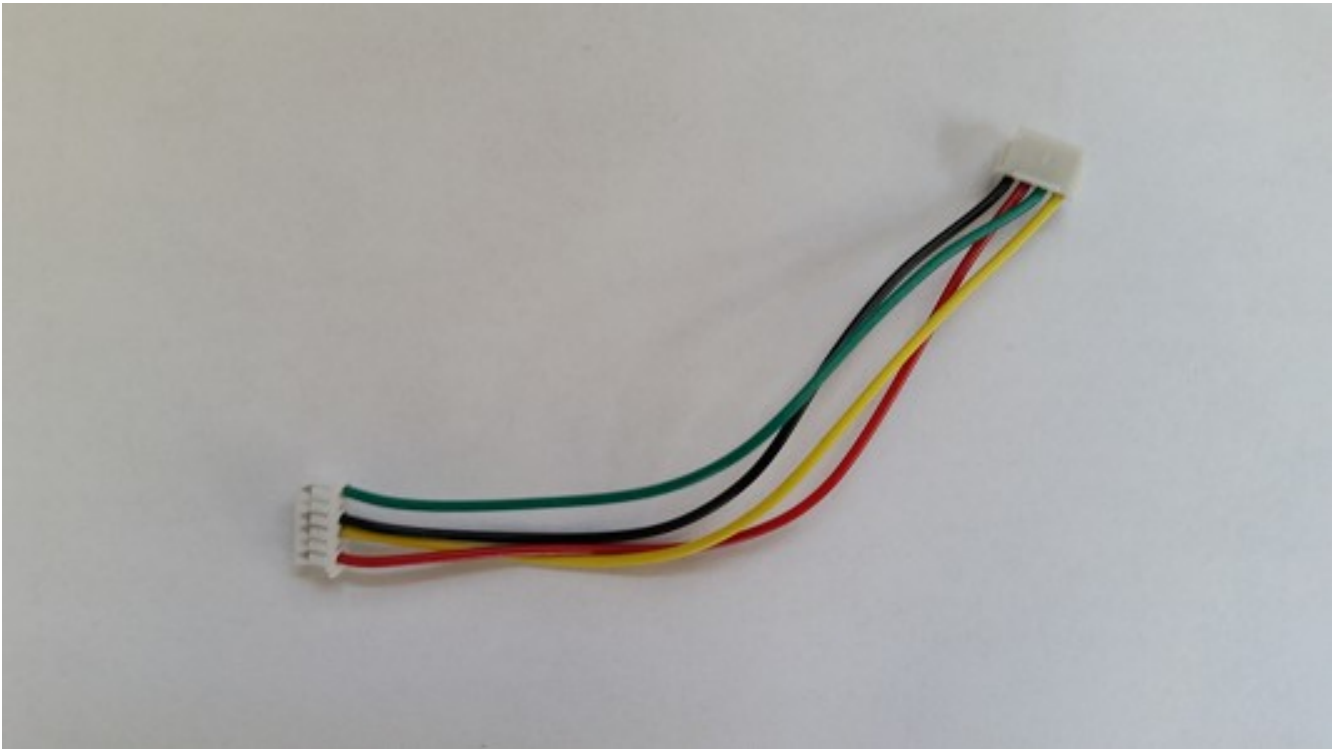
Step 4 – install slip-ring and PCB into housing



Step 5 – add screws to retain slip-ring

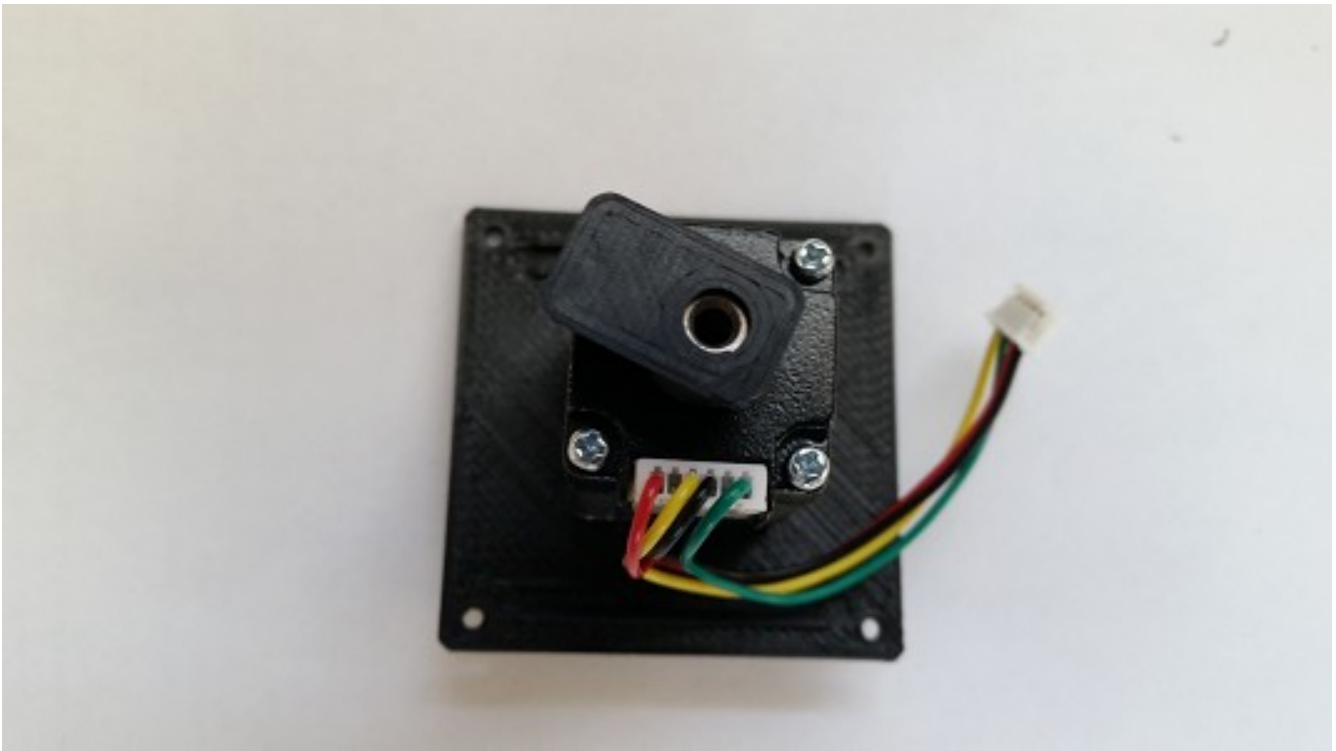


Step 6 – pass slip-ring cable through motor shaft

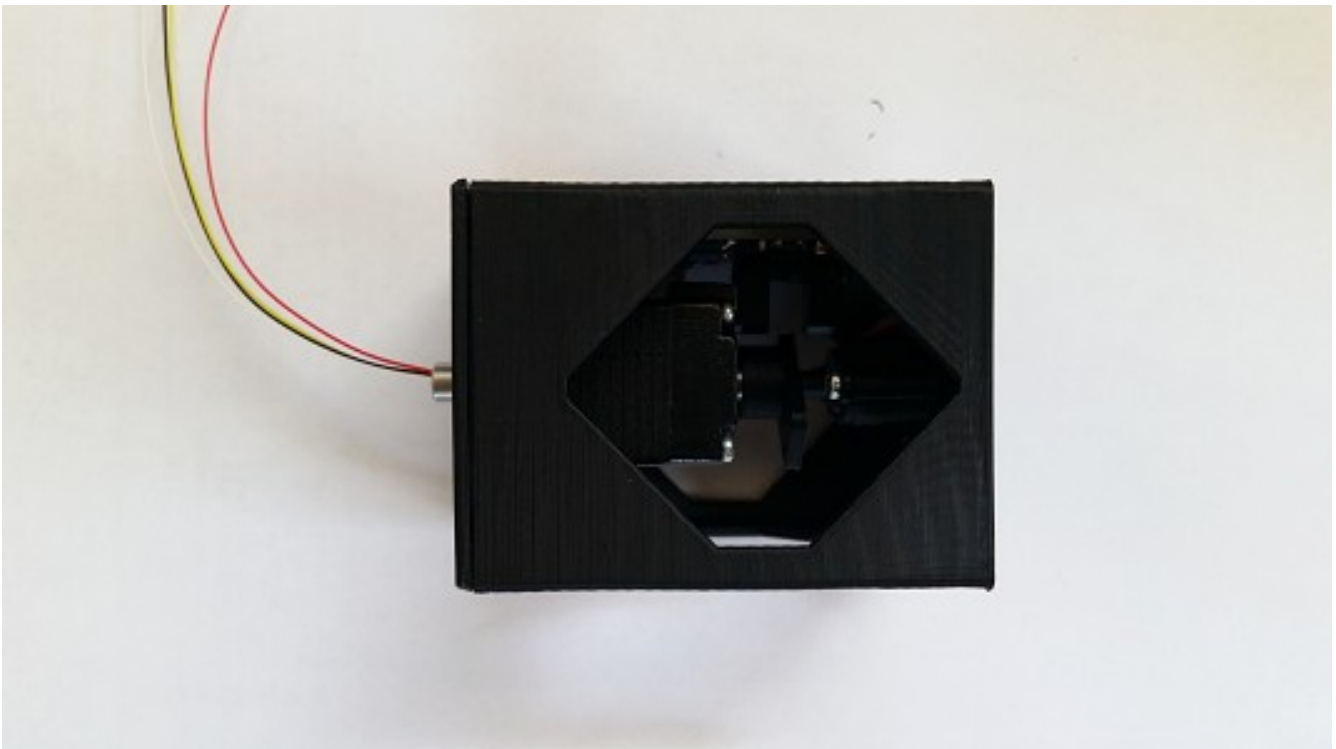


Step 7 – get motor cable

Rhoeby Dynamics LLC, P.O. Box 3806, Santa Cruz, CA, 95063, USA.  
[www.rhoeby.com](http://www.rhoeby.com) December, 2015

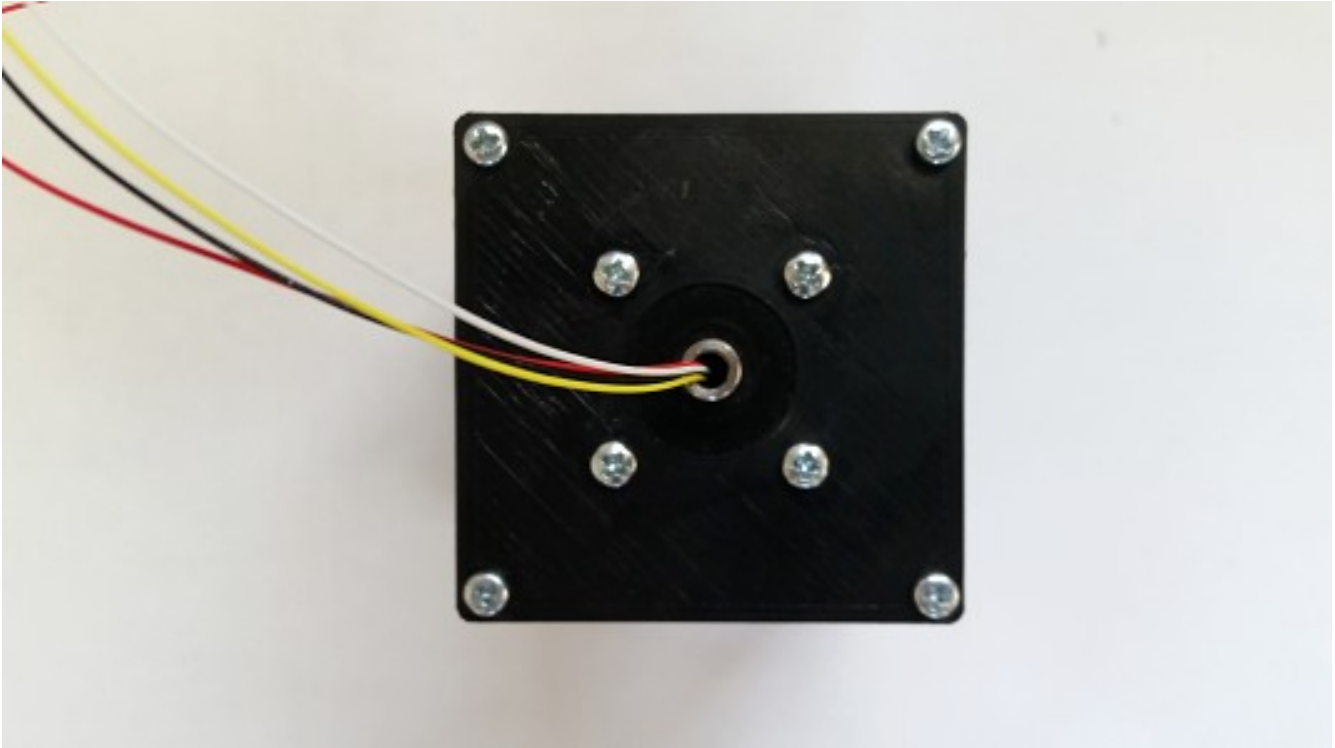


Step 8 – plug in connector to motor

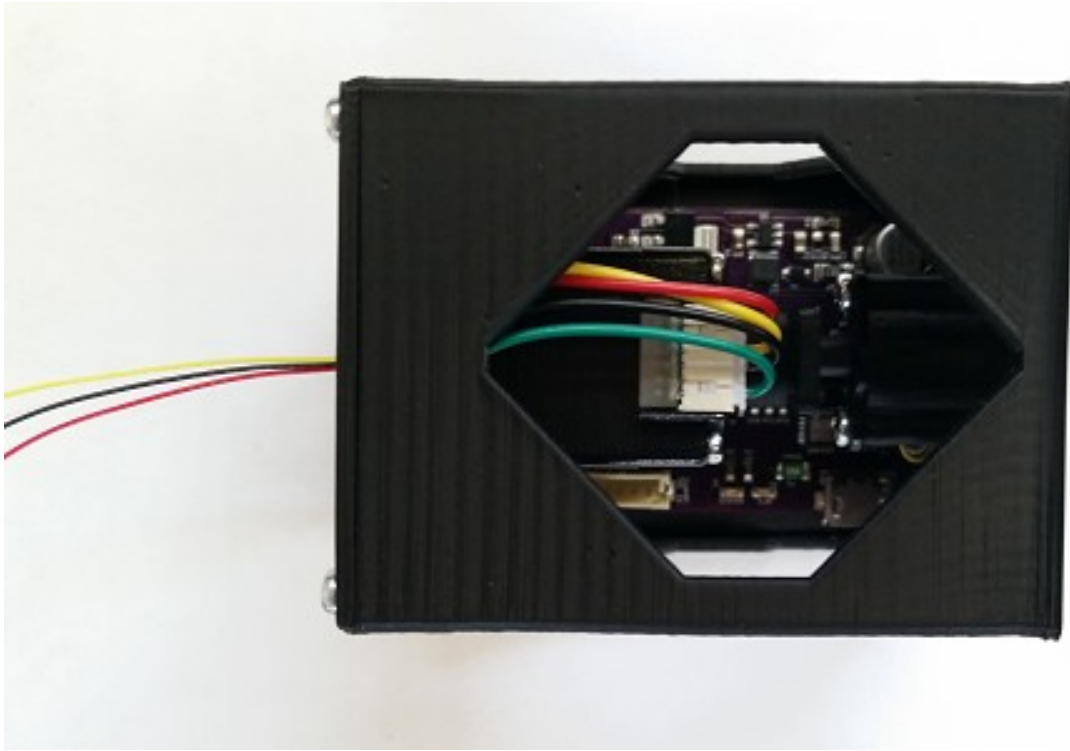


Step 9 – push motor into housing

Rhoeby Dynamics LLC, P.O. Box 3806, Santa Cruz, CA, 95063, USA.  
[www.rhoeby.com](http://www.rhoeby.com) December, 2015



Step 10 – screw lid onto housing base



The completed lower assembly

